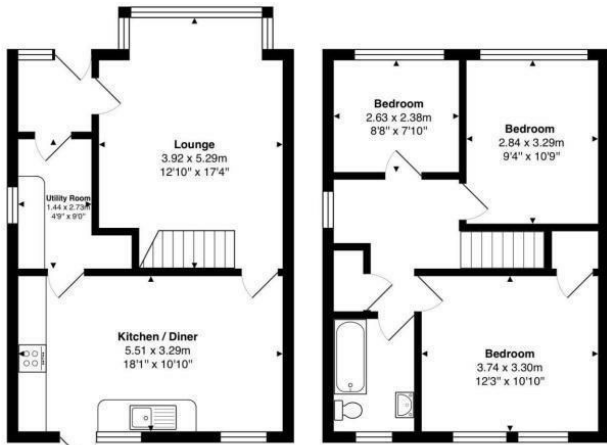




Keith  
Ashton

Upper Ryle,  
Brentwood



Total Area: 90.0 m<sup>2</sup> ... 968 ft<sup>2</sup>  
 Measurements are approximate for illustrative purposes only and may have been taken from the widest area  
 Floorplan Copyright Equinox Energy Performance Certificates  
 www.energyperformancecertificates.biz



## 23 Upper Ryle, Brentwood, CM14 4YG

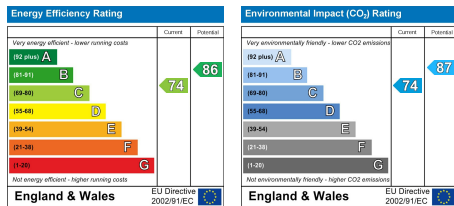
A delightful three bedroom family house situated in an ideal location just a short distance to Brentwood high street and main line train station.

The current vendors have completely modernised the property throughout to an extremely high standard. The downstairs comprises of entrance hallway, lounge, utility and a large open plan kitchen/diner with fully integrated appliances and double doors leading on to the outside patio.

The first floor boasts three good size bedrooms and a family bathroom with access to the loft from the landing.

The property also benefits from its very own private driveway offering plenty of off-street parking, the rear has a good size garden mainly laid to lawn with a raised patio area.

£450,000



### SERVICES:

Local Authority: Brentwood  
 Council tax band: D  
 Post code: CM14 4YG

### VIEWING:

Strictly by prior arrangement with Keith Ashton Estate Agents

### OPENING HOURS:

Monday to Friday: 8.45AM - 6.30PM | Saturdays: 9AM - 5.30PM | Sundays: 10AM - 2PM

### MORTGAGE INFORMATION:

We offer the additional facility of an in-house Independent Financial Adviser who will access all mortgage lenders with the purpose of providing you with the benefit of choice. For quotations or comparables please call 01277 260858 or visit our interactive website at [www.mortgagebusiness.net](http://www.mortgagebusiness.net)



We the Agent have not tested any apparatus, fittings or services for this property. The plot size is intended merely as a guide and has not been officially measured or verified by the Agent. Photographs are for illustration only and may depict items which are not for sale or included in the sale of the property. As part of the service we offer we may recommend ancillary services to you which we believe may help you with your property transaction. We wish to make you aware, that should you decide to use these services we will receive a referral fee. For full and detailed information please visit 'terms and conditions' on our website [www.keithashton.co.uk](http://www.keithashton.co.uk)

Brentwood  
Tel. 01277 260858

Village Office  
Tel. 01277 375757

Lettings Office  
Tel. 01277 202200

Explore more @ [www.keithashton.co.uk](http://www.keithashton.co.uk)

